

THE BRIGHTEST STARS IN DRY CLEANING

ENVIRO-STARS

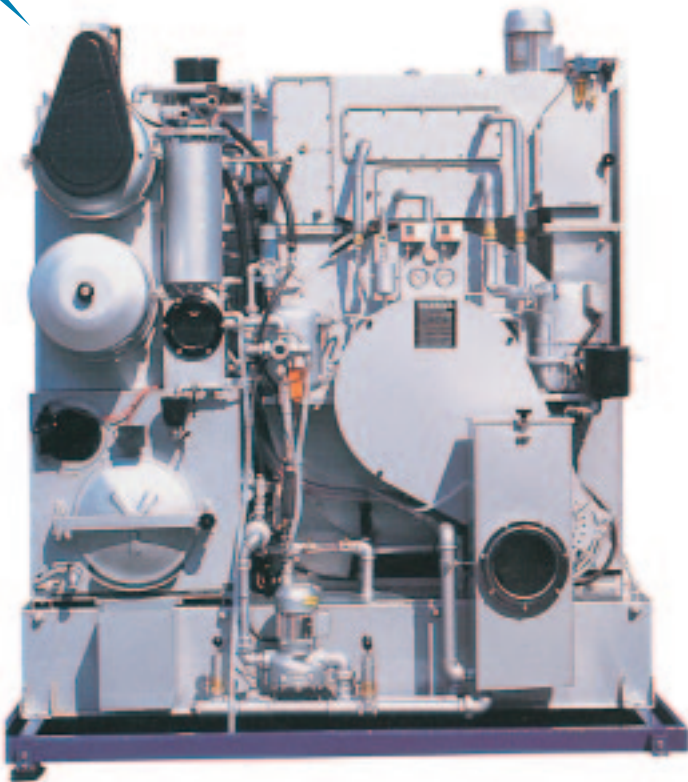
FROM **AERO-TECH**
USA INC.



THE ENVIRONMENTAL LEADER



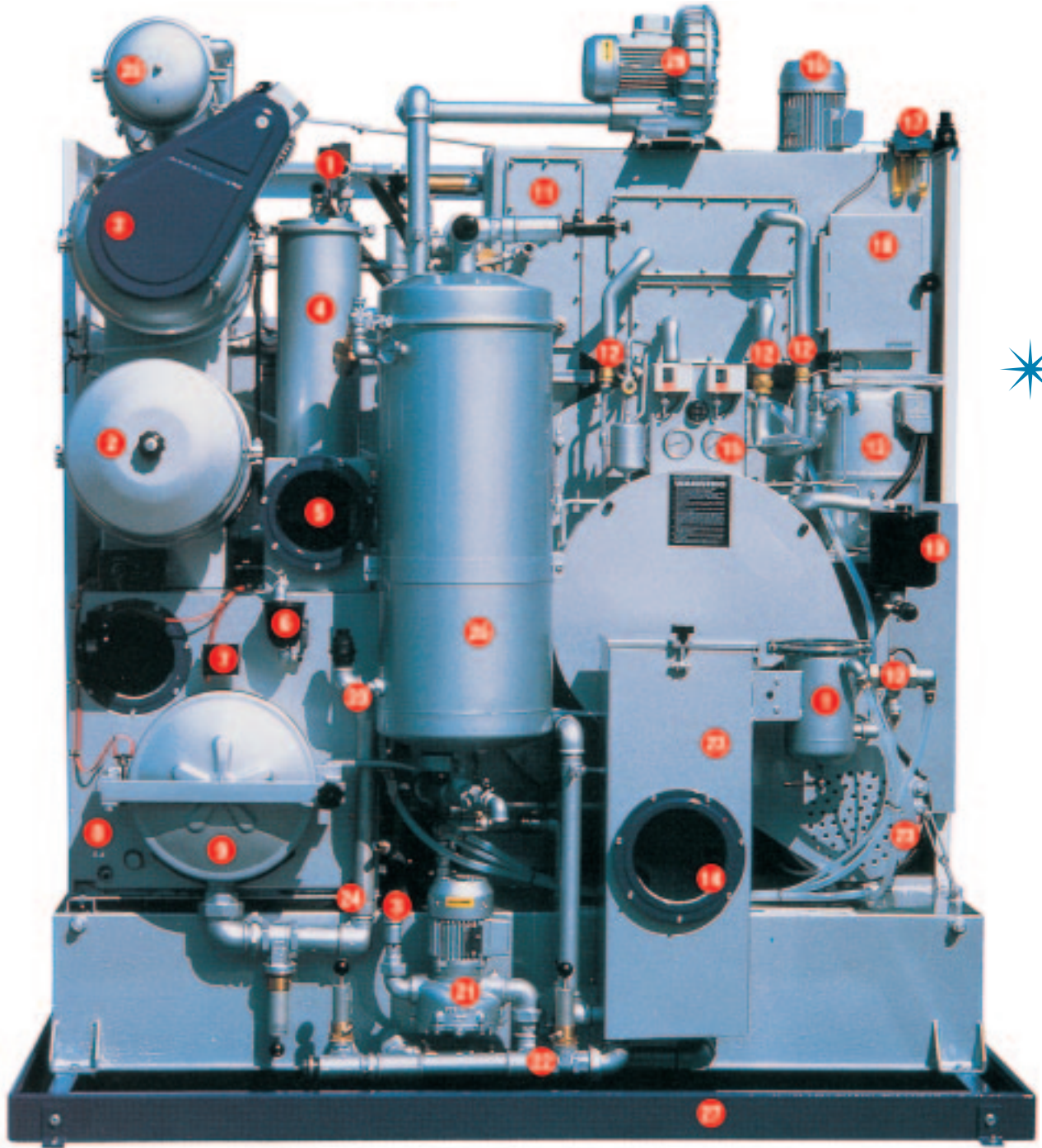
1. TWO SEPARATE WATER SEPARATORS
2. TWO CONVERTIBLE FILTERS
3. EXTRA-LARGE INLINE SOLVENT COOLER 40 & 50 LB. "ICE-TEMP" REFRIGERATED COOLER 60 & 80 LB.
4. EXTRA-LARGE STILL CONDENSER (2 ON 80 LB. MODEL)
5. STAINLESS STEEL WATER SEPARATOR, WITH SIGHT GLASS
6. STILL ADDITIVES CONTAINER
7. AUTOMATIC STILL CUTOFF
8. EXTRA-LARGE STAINLESS STEEL STILL
9. STILL DOOR LARGE ENOUGH FOR CARTRIDGES
10. AUTOMATIC DRY CONTROL (ON ALL MODELS)
11. ALL STAINLESS STEEL RECOVERY SECTION
12. SELF-SEAL REFRIGERATION UNIONS
13. "COPELAND", U.S.A. REFRIGERATION
14. SELF DRYING BUTTON TRAP WITH SIGHT GLASS
15. REFRIGERATION GAUGES
16. FAN MOTOR
17. AIR LINE FILTER/LUBRICATOR
18. DOUBLE-SCREEN LINT FILTER
19. AUTOMATED ADDITIVES CONTAINER
20. STILL STEAM SWEEP
21. EXTRA-LARGE SOLVENT PUMP
22. EXTRA-LARGE SOLVENT LINES
23. ALL STAINLESS STEEL BUTTON TRAP AND HOUSING
24. STILL SLUDGE PUMP
25. DRIVE MOTOR (2-SPEED EXTRACT ON 60/80-LB.)
26. "SUPER-SORB" C.V.A. SYSTEM
27. "SAFE GUARD" CONTAINMENT TANK
28. CARBON TOWER
29. SUPER-SORB FAN MOTOR
30. MONITORING GAUGES ON FRONT
31. LARGE, HEAVY-DUTY, LOADING DOOR
32. "LOGITROL" DUAL CONTROL PANEL
33. SELF-DIAGNOSTIC, TROUBLE SHOOTING PANEL



ENVIRO-STAR 2100



ENVIRO-STAR 2100 PLUS



5th GENERATION

FILTRATION SYSTEM

- * Virtually any filtration or distillation setup now or later
- * Two independent filter circuits for separation of light and dark cleaning
- * Cartridge filtration or spin disc filtration (Ecological discs with all carbon filter) or both
- * Easy conversion in the field to a different filter type
- * Large stills provide constant distillation with or without filtration
- * Transfer solvent directly from tank to tank
- * Control panel allows you to "polish" solvent over filter during drying, add dry time, drain filters and more
- * Selectable, automatic "perc-sensor" dry control
- * Two-speed extract on the 60/80 lb models

BUILT BETTER

- * Advanced recovery section design
- * Ultra-modern closed-circuit refrigeration
- * Reduced emissions meet and exceed EPA/OSHA regulations
- * Complete solvent vapor recovery
- * Extended perc mileage - up to 50,000 lbs. per drum!
- * Reduced vibration
- * Improved stability
- * Self-seal disconnects on the refrigeration lines
- * Immediate, easy access to the coils
- * Refrigeration gauges standard on all models
- * Freon R-22
- * Special thermostat prevents accidental freezing of the steam coil

BETTER CLEANING

- * Ice Temp™ Solvent Cooling System on 60 and 80 lb. machines.
You dial the solvent temperature you want.
- * 50% heavier than the competition
- * Massive construction at high-stress points
- * Low center of gravity reduces vibration
- * All stainless steel components - still, water separator, recovery section and button trap
- * Quiet operation
- * Long life
- * Less down time
- * The new Enviro-Star Plus exceeds all EPA and OSHA environmental codes.



LOGITROL™

Easiest to use control panel on the market. Every switch is labeled in English (no hard-to-decipher international symbols). Both air-flow and solvent-flow maps make it easy to run AERO-TECH manually and training time is reduced to a few minutes. Self-diagnostic panel makes trouble-shooting easy.



ANALOG GAUGE PANEL

All important gauges on front of machine for constant monitoring of operational temperatures and pressures.



AMERICAN DESIGNED REFRIGERATION SYSTEM

The world's best and most efficient system. Requires much less H.P. than European systems. Saves you up to 40% on electricity

CAPACITIES

35 lb. 40 lb. 50 lb.
60 lb. 80 lb.



290 N.E. 68th Street, Miami, Florida 33138
1-305-758-8562 • 1-800-746-4583 • Fax 1-305-751-8390
www.drywetcleaning.com

AERO-TECH TECHNICAL SPECIFICATIONS PERCHLORETHYLENE MODELS, 3 TANKS		353	403	503	603	803	
MAXIMUM LOAD CAPACITY	LBS.	35	40	50	60	80	
CYLINDER:	Diameter	in.	32.8	36	38.5	40.8	46.8
	Depth	in.	20.5	20.5	21.5	23.8	23.8
	Volume.	cu.	10	12.1	14.5	18.0	23.7
	Wash Speed	ft.	40	37	35	34	33
	Extract Speed	RPM	400	370	360	165/360	165/360
CAPACITIES :	Tank 1	Gal	35	48	48	63	75
	Tank 2	Gal	35	48	48	63	75
	Tank 3	Gal	35	48	48	63	75
	Still - Maximum	Gal	43	71	71	110.4	126.6
	Still - (Useable)	Gal	36	55	55	92.8	106.6
FILTRATION:	Number of Circuits		2	2	2	2	2
	Convertible Cartridge Splits		4	6	6	6	8
	Large Cartridge Filter		2	2 or 1	1	1	1
	Spin Disc (Powderless/Powder)			1	1	1	1
	Carbon Tower (Std. Cartridge)			1	1	1	1
DISTILLATION RATE:	Gal./Hr. Steam		60	60	60	95	116
	Electric						
MOTORS:	Wash.	HP	.65	.8	1.0	1.5	2.0
	Extract	HP	2.0	3.0	4.0	4.5	5.5
	(2 speed 603 & 803)	HP				6.0	7.0
	Pump	HP	.75	1.0	1.0	1.5	1.5
	Fan	HP	1.5	1.5	2.0	2.0	3.0
	Exhaust	HP	0.1	0.1	0.1	0.1	0.1
	Refrigeration	HP	2.5	3.0	3.0	3.0	3.5
	Spin Filter	HP		.75	.75	1.0	1.0
	Super Sorb Fan/ESP Models	HP	1.0	1.0	1.0	1.0	1.0
UTILITIES:	Electric, 208-240/60/3						
	Steam Model: Circuit Breaker	AMP	40	40	50	60	75
	Steam Consumption:						
	Dry Cycle	HP	.5	.6	.65	.65	.77
	Still	HP	1.5	1.9	1.9	2.3	2.6
	Total	HP	2.0	2.5	2.55	3.0	3.4
DIMENSIONS:	Width	in.	69	79	79	83	91
	Depth Assembled	in.	59	59	61	68	78
	Depth "Stripped"	in.	50	52	52	59	68
	Height Assembled	in.	82	82	85	82	82
	Height "Stripped"	in.	81	82	85	82	82
WEIGHTS:	Empty	lbs	3215	3675	3995	4790	5780
	Full	lbs	5145	6105	6425	7828	9466
	Shipping	lbs	3390	3925	4270	5090	6130

Note: Add 3 ½ " for Containment Tank - Add 3" on overall height for Absorber option.

All specifications subject to change without notice.