



TECHNICAL INFORMATION



IDEAL I40

WORKING MACHINE WITH SOLVENT:	WATER/ALTERNATIVE SOLVENT	
MACHINE CAPACITY	Lbs	40

BASKET

Diameter	inches	39.4
Depth	inches	20.1
Volume	cu-ft	14.1
Wash speed with Inverter	rpm	20 ÷ 50
Extract speed with Inverter	rpm	300 ÷ 600
Door opening	inches	19.7

TANKS

Useful volume solvent tank 1	gal	29.1
Useful volume solvent tank 2	gal	43.6
Useful volume water tank	gal	35.7


FLOOR SAFETY TANK CAPACITY	gal	87.2
-----------------------------------	------------	-------------


ELECTRIC POWER

(220 V - 60 Hz)

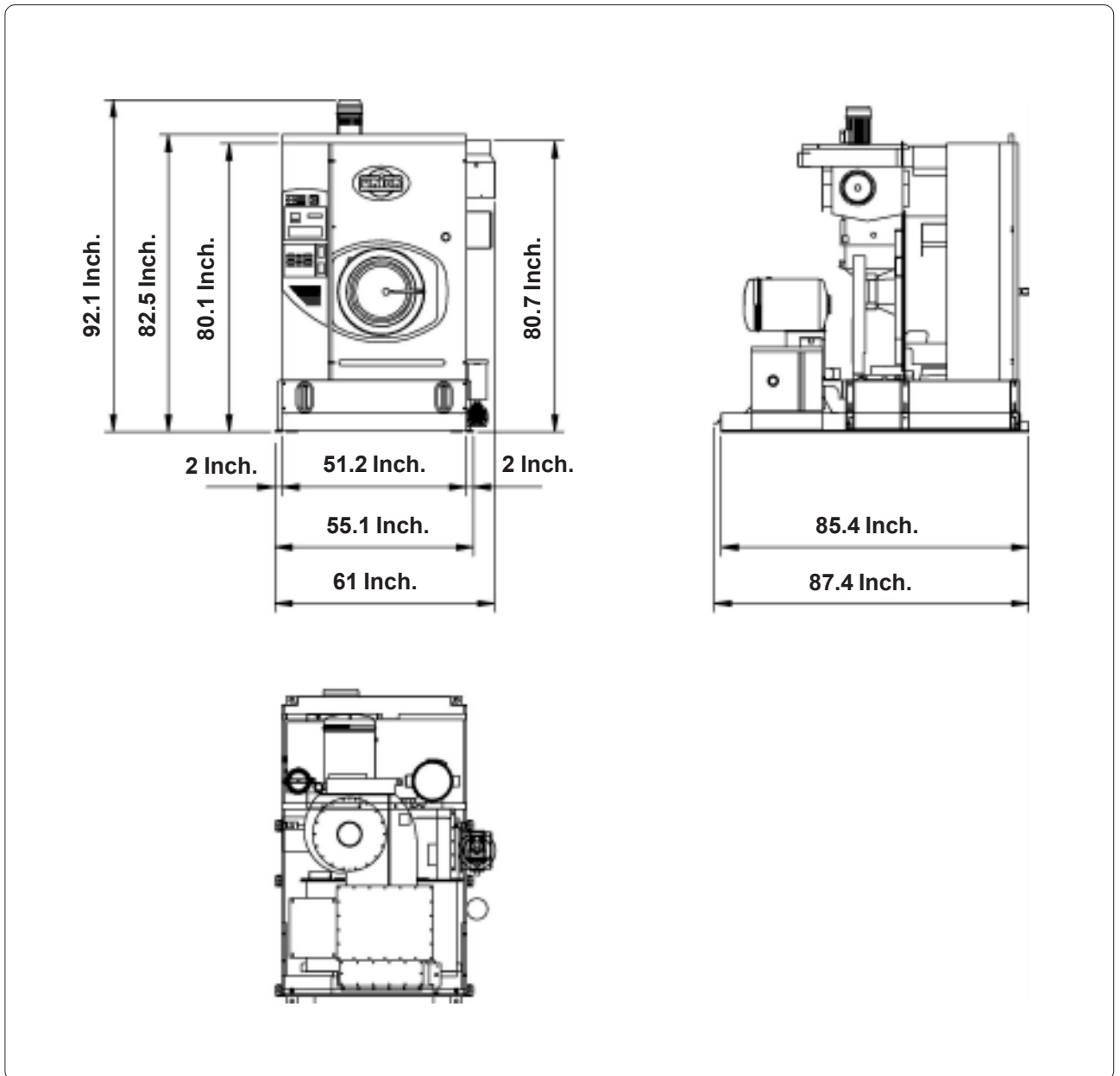
Wash motor	Hp	1 ÷ 4	Kw	0.75 ÷ 3
Extract motor	Hp	7.5	Kw	5.5
Solvent pump motor	Hp	1	Kw	0.75
Water pump motor	Hp	0.75	Kw	0.55
Fan motor	Hp	3	Kw	2.2
Fridge compressor MT81	Hp	6.5	Kw	4.85
Peristaltic soap pump 1 (Optional)	Hp	---	Kw	0.01
Peristaltic soap pump 2 (Optional)	Hp	---	Kw	0.01
Peristaltic soap pump 3 (Optional)	Hp	---	Kw	0.01
Peristaltic soap pump 4 (Optional)	Hp	---	Kw	0.01
Peristaltic soap pump 5 (Optional)	Hp	---	Kw	0.01
Peristaltic soap pump 6 (Optional)	Hp	---	Kw	0.01

NOTE: Acoustic emission level of the machine is lower than 70 dB (A)

FILTRATION AVAILABLE IN THIS MODEL			
Version	ONE CARTRIDGE KR FILTER		
	Volume cartridge filter housing	gal	14.5
	Cartridge filter area	ft ²	137.7
	Cartridge number	nr	2

FILTRATION AVAILABLE IN THIS MODEL			
Version	TWO CARTRIDGE KR FILTER		
	Volume cartridge filter housing	gal	14.5 x 2 = 29
	Cartridge filter area	ft ²	137.7 x 2 = 275.4
	Cartridge number	nr	2 x 2 =4

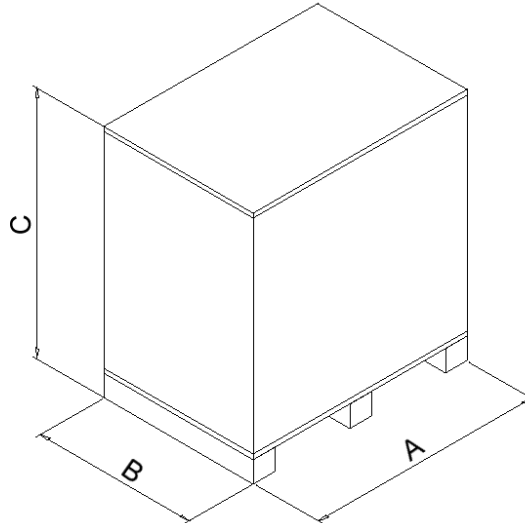
DIMENSIONS



CHARGES

Empty machine weight	Lbs	3704
Machine weight with solvent	Lbs	5016
Static charge on the floor with solvent	Lbs/ft ²	165
Dynamic charge on the floor (+10%)	Lbs/ft ²	270

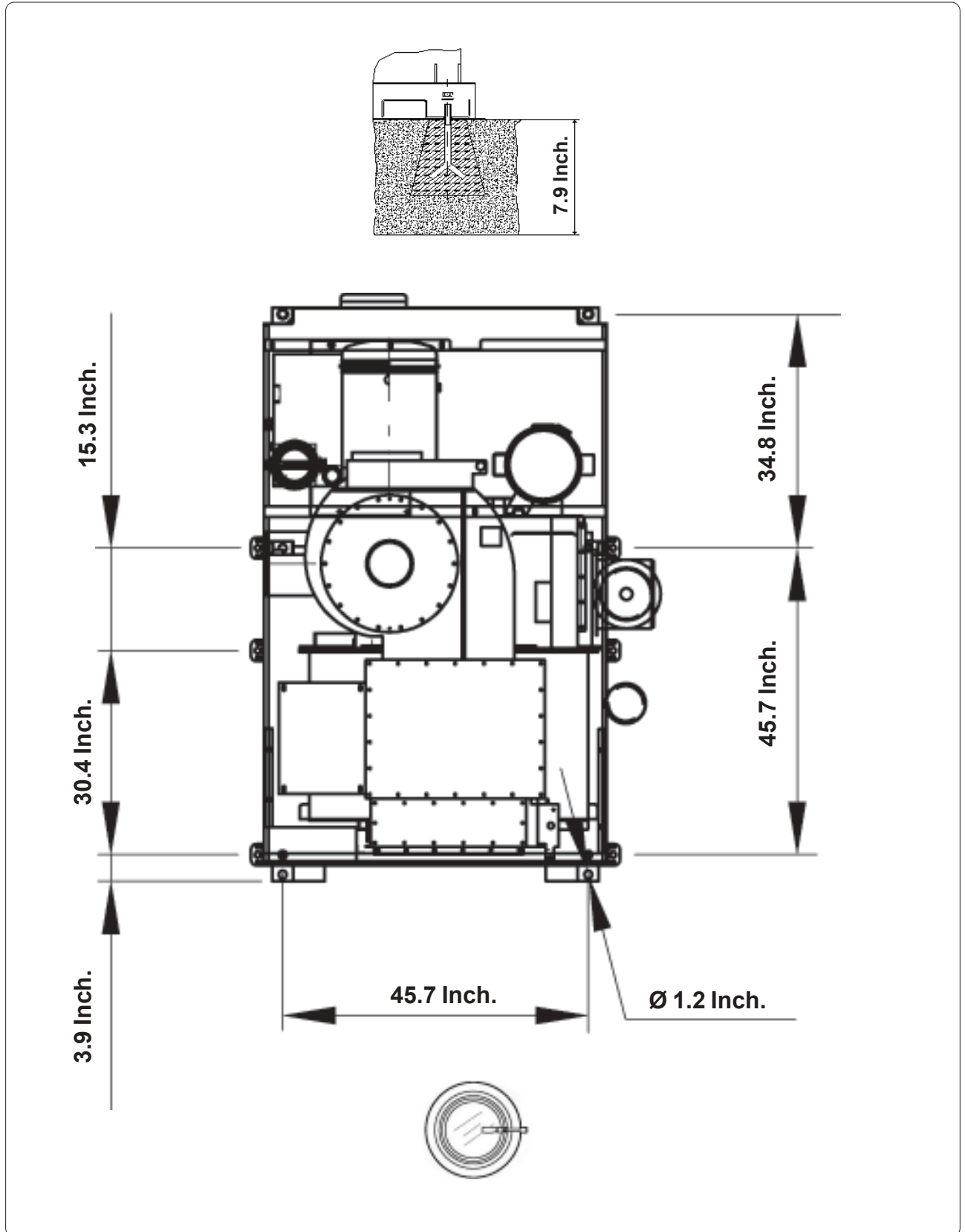
PACKAGED MACHINE DIMENSIONS AND WEIGHTS



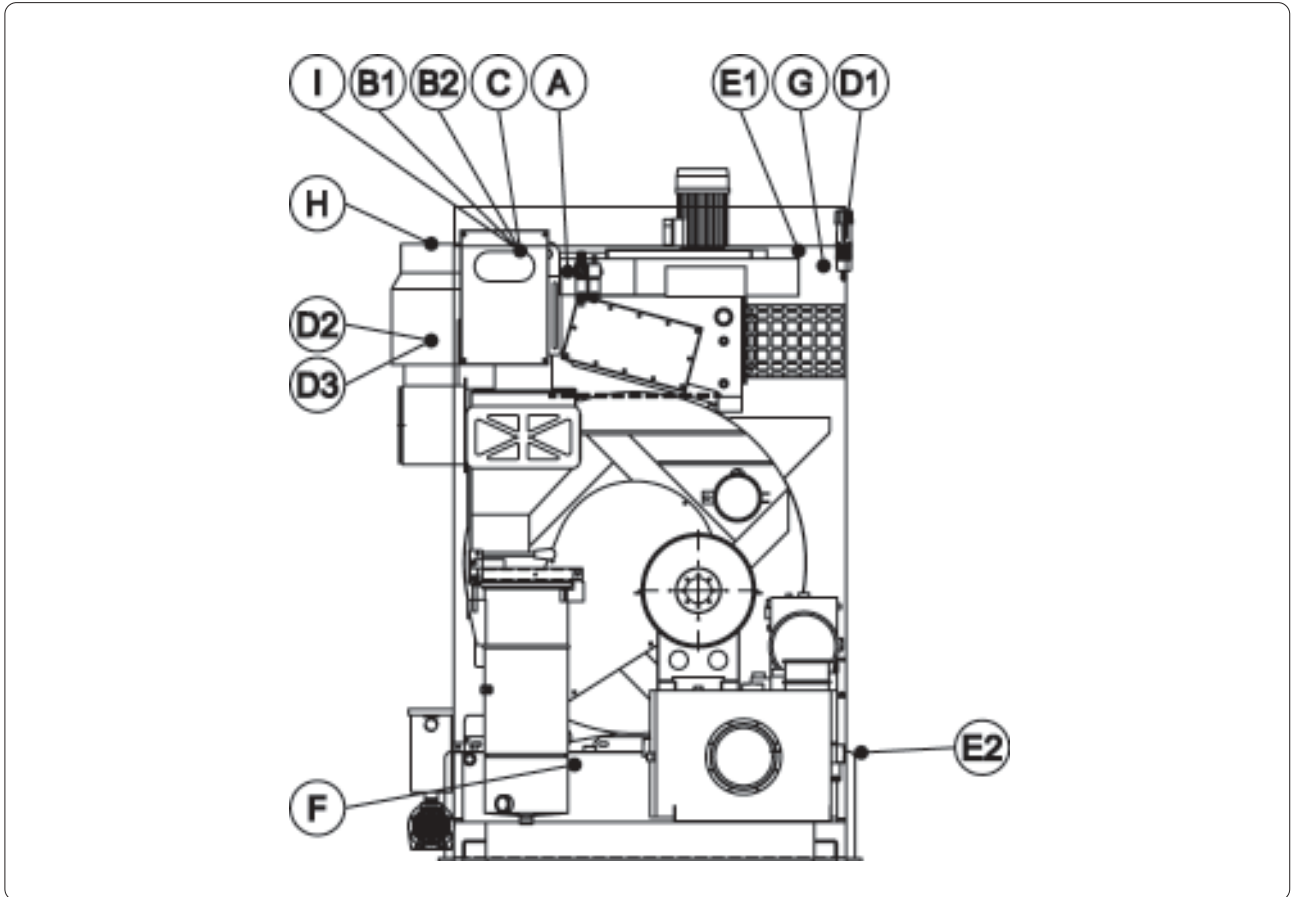
PACKAGED MACHINE DIMENSIONS			
Machine type		Carton	Wooden cage
IDEAL I40	A		inches 89.8
	B		inches 60.6
	C		inches 95.5

PACKAGED MACHINE WEIGHTS		
Machine type	Carton	Wooden cage
IDEAL I40		Lbs 4398

FIXING POINTS



CONNECTIONS



A	Compressed air inlet	Inch 0.24
B1	Steam heater inlet (water cleaning mode)	Ø 1/2"
B2	Steam heater inlet (HDC/G.E. cleaning mode)	Ø 1/2"
C	Condensate heater outlet	Ø 1/2"
D1	Refrigerator water inlet	Ø 1"
D2	Hot water inlet	Ø 1"
D3	Cold water inlet	Ø 1"
E1	Refrigerator water outlet	Ø 1"
E2	Water tank outlet	Ø 2"
F	Machine loading	Ø 1/2"
G	Electric connection	
H	Hot air blowdown	Ø 7.9 Inch
I	Nitrogen connection	Ø 1/2"

SOLVENT TYPE				
NECESSARY QUANTITY OF SOLVENT/WATER TO FILL THE MACHINE				
SOLVENT FILLING - 1 KR FILTER	gal	91.7	Lbs	563
SOLVENT FILLING - 2 KR FILTERS	gal	106.2	Lbs	666
WATER FILLING	gal	35.7	Lbs	298

INFORMATION FOR THE ELECTRICAL CONNECTIONS (220 V - 60 Hz)

STEAM Version	Kw	14	Amp	72
---------------	----	----	-----	----

GENERAL INFORMATION		
Required cooling water pressure	PSI	43 ÷ 72
Required cooling water temperature	°F	64.4 ÷ 73.4
Required air pressure	PSI	101 ÷ 116
Required steam pressure	PSI	58 ÷ 72
Required steam availability	Lbs/h	132

All technical data are subject to change without notice.