



# The new **standard for clean.**

The steam you need for the laundry and dry-cleaning industries.



## The highest quality and performance.

For almost 80 years, Cleaver-Brooks has been setting the new standard for high-performing, quality boiler room products and systems for virtually every industry. With a commitment to technological superiority while reducing operating costs and environmental impact, we always keep the unique needs of every industry in mind. The Laundry and Dry Cleaning segment is one of those industries. Whether it's floor space, fuel options, fuel costs, emissions, or a plug-and-play, pre-engineered package, Cleaver-Brooks has the right option for you. Learn how to make the most of your laundry or dry-cleaning business at [laundryanddrycleaningboilers.com](http://laundryanddrycleaningboilers.com).

### Meeting The Laundry And Dry Cleaning Industries' Needs At The Right Price

The most fuel-efficient and technologically advanced boilers in the industry

Engineered to perform under the toughest conditions

Meets all environmental regulations

Absolute lowest cost of operation



### A boiler is useless if it's unreliable.

The reliability of our boiler products starts with a better engineered boiler. And there simply isn't a better engineered, better manufactured, and more technologically advanced boiler on the market than a Cleaver-Brooks. Of course, genuine Cleaver-Brooks parts and service go a long way in assuring the boiler system stays on line, producing reliable steam year after year.



## CLEARFIRE CFH & CFV

The Cleaver-Brooks compact gas-fired ClearFire boilers are designed specifically for the rigors of the commercial market and are available in sizes from 10 to 60 boiler horsepower, while delivering up to 150 psig steam pressure.

### Sizes

10–60 horsepower

### Design Pressure

Up to 150 psig steam

### High Efficiency

A variable-speed blower motor provides extended burner turndown for the highest in-service efficiency and reduced cycling.

### Low Emissions, Standard

The combustion design eliminates need for flue gas recirculation while providing low emissions with no costly upgrades. (< 20 ppm NO<sub>x</sub> and < 10 ppm CO).

### C-B Falcon Control

A total integrated boiler control with simple touch-screen communications for ease of operation and reliability.



## ELECTRIC RESISTANCE BOILER

Cleaver-Brooks Electric Boilers are designed for heavy-duty commercial processes. They serve as either a primary or supplementary source of both steam and hot water. These immersion element boilers are quiet, flame-free, safe, and compact.

### Sizes

2–350 horsepower (12–3375 kW)

### Design Pressure

Up to 250 psig steam

### High Efficiency

The electric boiler will provide nearly 100% efficiency at all operating points.

### Emissions

Electric boilers are 100% emission free.

### Compact Design

The smaller footprint reduces the overall boiler room space.

### No Stack or Fuel Requirements

The unit can be located anywhere in the building.

### Quiet Operation

Significantly lower combustion noise and minimal moving parts.



## CBR

The Cleaver-Brooks CBR is the most fuel-efficient boiler available for large laundries and industrial use. Advanced controls, maximum safety, and a variety of flexible options allow for a customized solution to fit your exact needs.

### Sizes

125–350 horsepower

### Design Pressure

Up to 250 psig steam

### High Efficiency

Packages up to 90% efficiency with condensing economizer.

### Low Emissions

Delivers 60 ppm NO<sub>x</sub> when burning natural gas with optional 9 and 30 ppm.

### Flexible Fuel Firing

Multiple fuel firing including gas and oil.

### Ease of Maintenance

Hinged and davited doors for easy access to tubes and furnace. Burner drawer unbolts for easy removal.

### Single Source—Maximum Safety

The model CBR is designed as an integrated package matching the pressure vessel, burner, and controls for optimal performance and safety.



# CLEARFIRE CFH & CFV

The **ClearFire V** is the most technologically advanced vertical boiler ever built.

The **ClearFire H** features all the technology of the CFV in a dependable horizontal design.

10–60 HP

Absolutely the most fuel-efficient boilers in the industry.

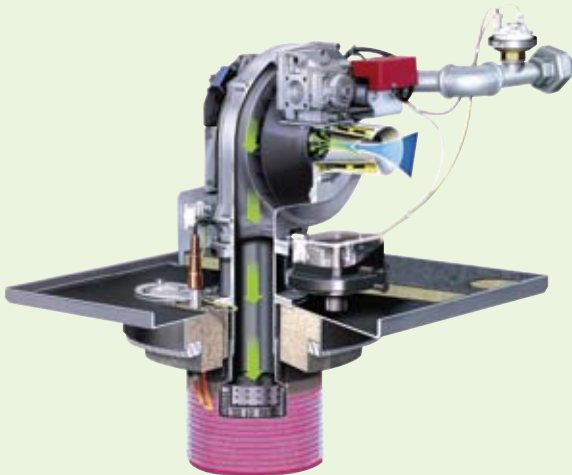
Ultra-low emissions come standard.

A boiler quieter than most washing machines—less than 70 dB.

Sealed combustion eliminates need for dedicated boiler room.\*

\*Varies by local code.

## Advanced Technology Comes Standard



### Advanced Burner Technology

Premium metal alloy mesh burner premixes air and fuel for the ultimate in fuel savings.

Variable-speed motor modulates burner to precisely match steam production to demand, reducing fuel usage.

Low-emissions burner meeting all state and federal environmental regulations comes standard.



### Patented Heat Transfer for Ultimate Efficiency

Patented AluFer<sup>®</sup> technology achieves optimal heat transfer in the boiler.

Superior heat transfer means a boiler with unrivaled efficiency.

Superior to all conventional tube and tubeless boilers.



### Falcon Touch-Screen Control

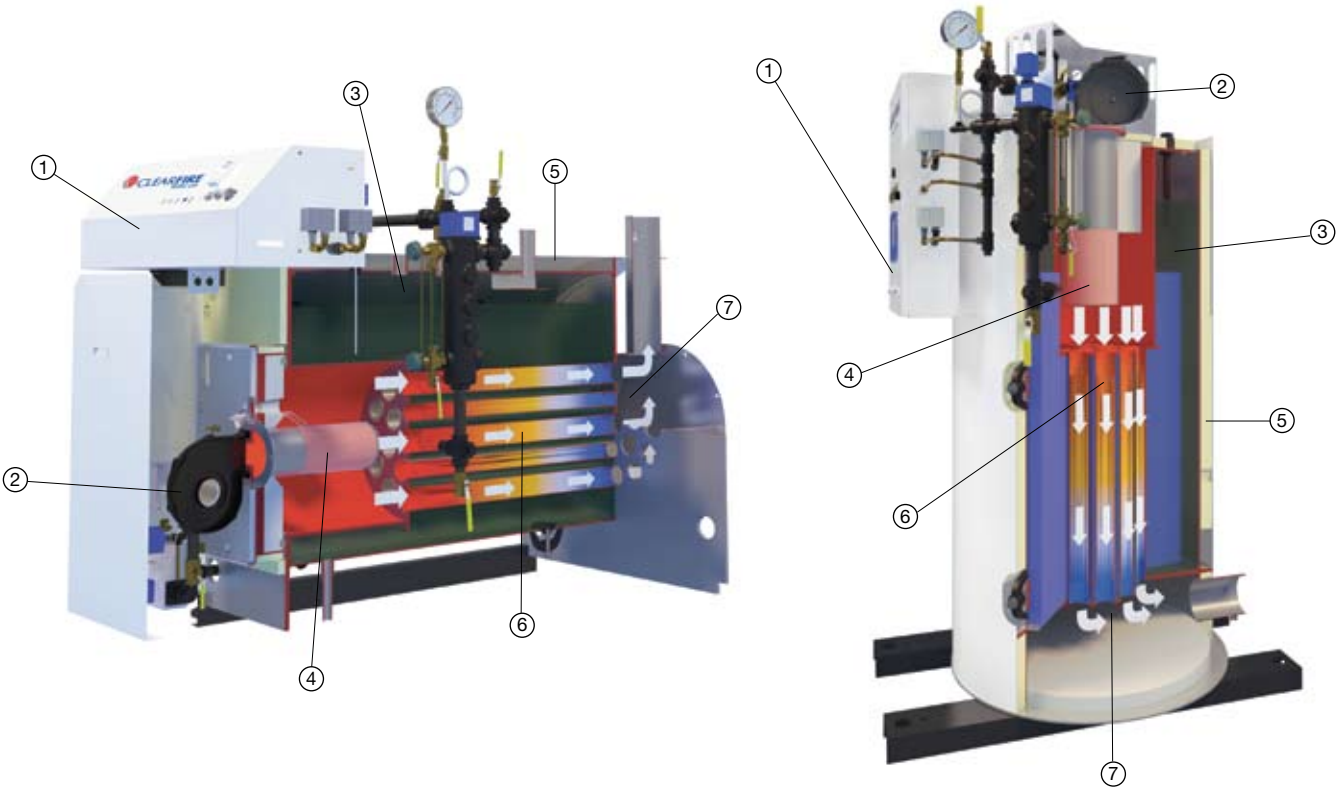
Advanced microprocessor control comes standard.

Color touch-screen control operates boiler as efficiently as possible.

Simple and easy to use.

Built-in safety features with alarm history.

## SIMPLE DESIGN. HIGH PERFORMANCE.



### CFH and CFV Features

- 1) Simple, Single-Point Electric Connection
- 2) Sealed Combustion Option
- 3) Large Steam Space for rapid response
- 4) Ultra-Low Emissions Premix Surface Burner

- 5) Water-Cooled Design eliminates classic refractory
- 6) Patented AluFer Heat Transfer Technology
- 7) Cold "Sludge Area" minimizes hard scale formation

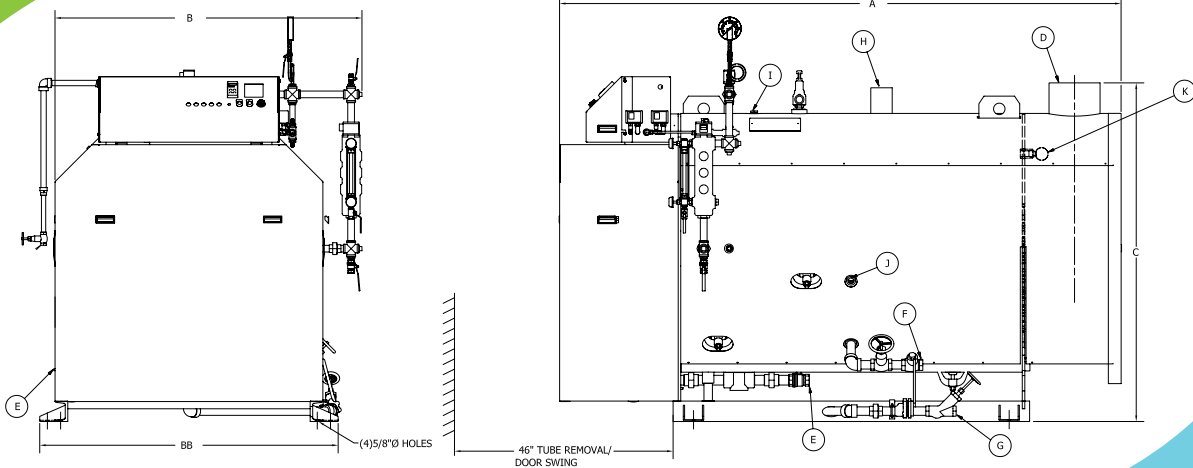
## Engineered to outlast under the toughest conditions.

Advanced boiler design dramatically reduces the amount of sludge and scale buildup in the boiler.

Premix surface burner and superior heat transfer prevent damage from overheating.

Water-cooled design with metal casing eliminates refractory in the boiler wall.

The absence of dampers and linkages provides a more reliable and maintenance-free boiler.



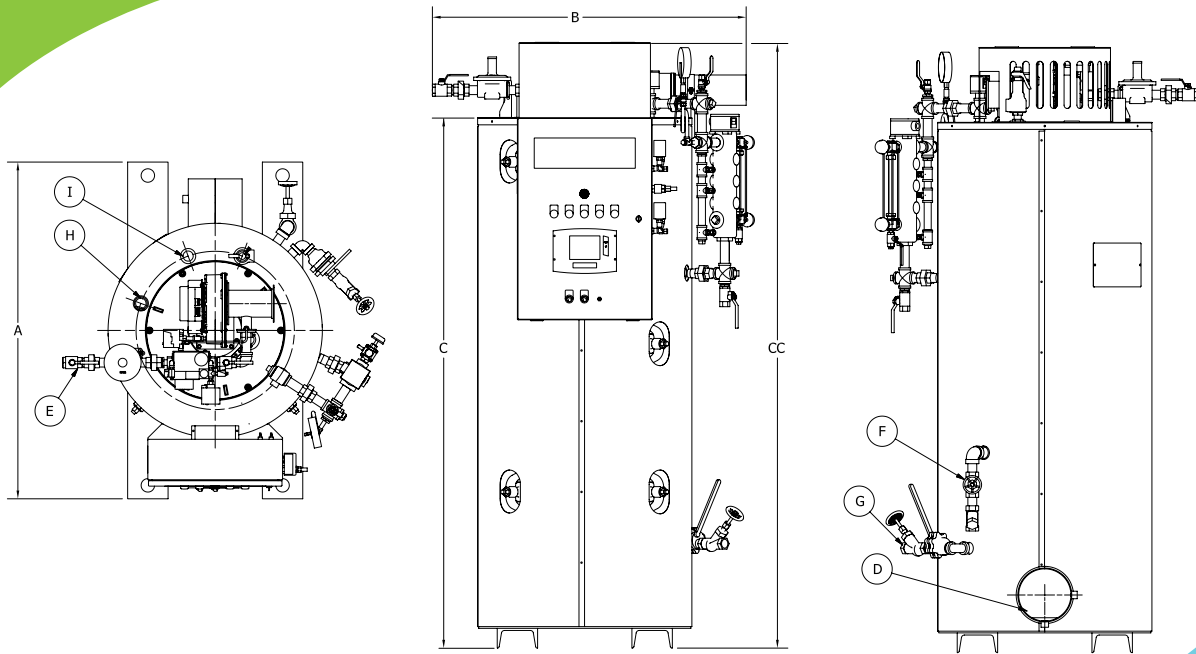
## ClearFire CFH Dimensions and Ratings

Ultra-efficient technology built to last in a horizontal boiler.

Boiler Horsepower	10	15	20	25	30	40	50	60
<b>Dimensions – inches</b>								
Overall Length (A)	86	86	87	87	92	104	110	110
Overall Width (B)	44	44	47	47	55.5	55.5	60.5	60.5
Width (BB) minus water column and blowdown	38	38	41.5	41.5	49	49	55	55
Overall Height (C)	54	54	57	57	66	66	68	68
<b>Connections - inches</b>								
Stack Nominal OD (D)	6	6	6	6	8	8	10	10
Gas Connection (E)	1	1	1	1	1 1/4	1 1/4	1 1/2	1 1/2
Feed Water (F)	1	1	1	1	1	1	1 1/4	1 1/4
Bottom Blowdown (G)	1	1	1	1	1	1	1 1/4	1 1/4
Steam Outlet (H) 15 psig	4	4	4	4	4	6	6	6
Steam Outlet (H) 150 psig	1 1/2	1 1/2	1 1/2	1 1/2	2	2	3	3
Surface Blowoff (I)	1 1/4	1 1/4	1 1/4	1 1/4	1 1/4	1 1/4	1 1/4	1 1/4
Chemical Feed (J)	1	1	1	1	1	1	1	1
Overflow (K)	1	1	1	1	1	1	1	1
<b>Steam Boiler Weights in lbs</b>								
Normal Water Weight - 15 psig	920	920	1,150	1,150	1,710	1,980	2,510	2,510
Normal Water Weight - 150 psig	1,010	1,010	1,250	1,250	1,850	2,150	2,700	2,700
Approx. Shipping Weight	2,450	2,450	2,750	2,750	3,400	3,700	5,200	5,200
<b>Power Requirements (115 V ac, 60 Hz, single phase)</b>								
Blower Motor Size (Watts)*	335	335	335	335	335	750	1,200	1,200
<b>Ratings**</b>								
Rated Capacity–Steam (lbs-steam/hr. from 212°F)	345	518	690	863	1,035	1,380	1,725	2,070
Efficiency %	86.2	85.2	85.6	85.1	85.9	85.8	86.2	85.8
Output (1,000 Btu/hr.)	339	503	674	838	1,015	1,351	1,697	2,027
Input (1,000 Btu/hr.)	394	591	788	984	1,181	1,575	1,969	2,363
Fireside Heating Surface (sq. ft.)	122	122	191	191	310	381	573	573
Turndown/Modulating Firing Range	4:1	4:1	4:1	4:1	4:1	5:1	5:1	5:1

\* For altitudes above 1500 ft., contact local Cleaver-Brooks authorized representative for verification of boiler and blower motor size.

\*\* From and at 212°F.



## ClearFire CFV Dimensions and Ratings

The power you need, in a compact vertical design.

Boiler Horsepower	10	15	20	25	30	40	50	60
<b>Dimensions – inches</b>								
Overall Length (A)	50	50	55	55	68	68	75	75
Overall Width (B)	32	32	39	39	47	47	56	56
Clearance Height (C)	73	77	73	79	72	78	81	87
Overall Height with Trim (CC)	84	90	84	90	86.5	92.5	99	105
<b>Connections - inches</b>								
Stack Nominal OD (D)	6	6	6	6	8	8	10	10
Gas Connection (E)	1	1	1	1	1 1/4	1 1/4	1 1/2	1 1/2
Feed Water (F)	1	1	1	1	1	1	1 1/4	1 1/4
Bottom Blowdown (G)	1	1	1	1	1	1	1 1/4	1 1/4
Steam Outlet (H)	1 1/2	1 1/2	1 1/2	1 1/2	2	2	3	3
Surface Blowoff (I)	1 1/4	1 1/4	1 1/4	1 1/4	1 1/4	1 1/4	1 1/4	1 1/4
<b>Steam Boiler Weights in lbs</b>								
Normal Water Weight - 150 psig	710	815	1,195	1,365	1,795	2,050	2,715	3,090
Approx. Shipping Weight	2,000	2,120	2,540	2,780	3,690	4,030	5,280	5,740
<b>Power Requirements (115 V ac, 60 Hz, single phase)</b>								
Blower Motor Size (Watts)*	335	335	335	335	335	750	1,200	1,200
<b>Ratings**</b>								
Rated Capacity–Steam (lbs-steam/hr. from 212°F)	345	518	690	863	1,035	1,380	1,725	2,070
Efficiency %	84.9	84.6	83.5	84	84.8	85	83.4	84.1
Output (1,000 Btu/hr.)	338	506	665	837	1,014	1,355	1,662	2,011
Input (1,000 Btu/hr.)	398	598	797	996	1,195	1,594	1,992	2,391
Fireside Heating Surface (sq. ft.)	84	103	128	159	208	258	312	388
Turndown/Modulating Firing Rate	4:1	4:1	4:1	4:1	4:1	5:1	5:1	5:1

\* For altitudes above 1500 ft., contact local Cleaver-Brooks authorized representative for verification of boiler and blower motor size.

\*\* From and at 212°F.

# Skid package solutions for plug-and-play steam.

Looking for a turnkey steam solution for your laundry? Cleaver-Brooks offers standard and complete steam boiler system skid-mounted packages in gas and propane fuels. A package saves you time installing the system since all you need are power, gas, and water connections. It's the absolute easiest way to get up and running and stay up and running with Cleaver-Brooks quality.

## A skid package can include:

- Feed System
- Blowdown Separator
- Chemical Feed System
- Water Softener
- Economizer



# ELECTRIC RESISTANCE BOILERS

2–350 HP (12–3375 kW)

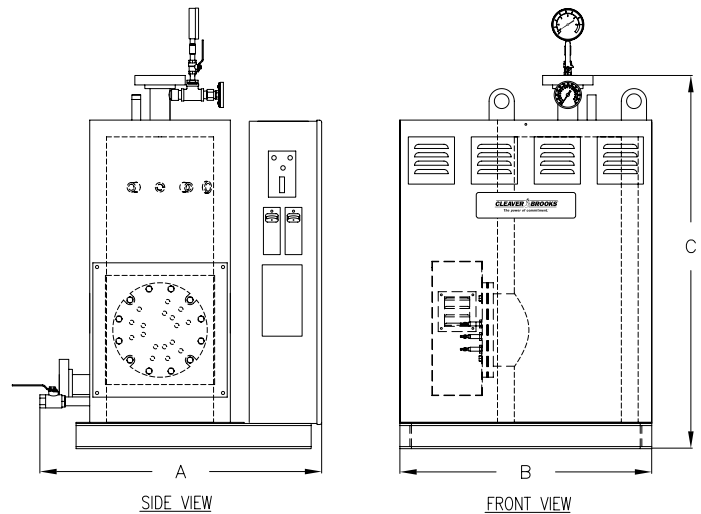
Steam and Hot Water.

Ultra-compact design requires no stack or fuel hookups.

Emission free, meets all federal and state emission regulations.

Lower cost of operation derived from nearly 100% energy conversion and opportunity to take advantage of off-peak electrical pricing.

Worry-free design with minimum moving parts and no combustion equipment.



## Electric Resistance Boiler Dimensions and Ratings

Small in size. Big in performance. 100% emission free.

Ratings		Dimensions - inches			Steam lbs/hr
Boiler Horsepower*	kW	Length (A)	Width (B)	Height (C)	
2–5	12–48	25	28	37	42–168
6–8	60–80	29	28	54	210–280
10–14	100–140	29	28	54	350–490
16–24	160–240	33	33	66	560–840
26–32	260–320	42	50	72	910–1120
35–43	340–420	42	50	72	1190–1470
45–49	440–480	48	56	72	1540–1680
51–74	500–720	48	56	72	1750–2520
77–88	756–864	54	62	72	2646–3024
92–103	900–1008	54	62	88	3150–3528
107–132	1044–1296	60	68	72	3654–4536
136–143	1332–1404	60	68	88	4662–4914
147–180	1440–1764	66	74	92	5040–6174
184–199	1800–1944	66	74	104	6300–6804

\* Larger sizes available.

# CBR



Compact firetube solution for larger laundries.

125–350 HP

Cleaver-Brooks legendary integral burner design for maximum efficiency.

When floor space is tight, the CBR delivers the most compact firetube solution in the industry.

Simply the lowest cost of ownership for larger laundries.

Lowest emissions as standard.

Optional secondary heat recovery, including condensing economizers, available for maximum efficiency.

## Innovative Heat Transfer for High Efficiency and Compact Design

CB spiral rib firetubes create superior heat transfer in a multi-pass design.

Optimum heat transfer allows for a more compact boiler and smaller footprint.



## Cleaver-Brooks Legendary Integral Burner Now Available for Your Laundry

Our integral burner has long been the benchmark for larger boilers. If you need the power of a traditional firetube, there is no better value.

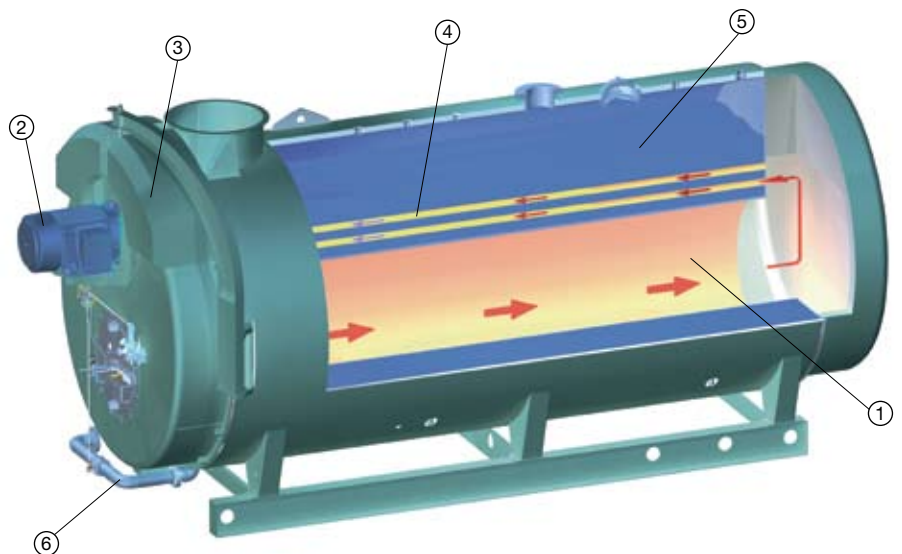
Completely integral design allows the burner to be precisely matched to the boiler for unrivaled efficiency.

Fully modulating burner matches steam supply with production demand, reducing fuel usage.

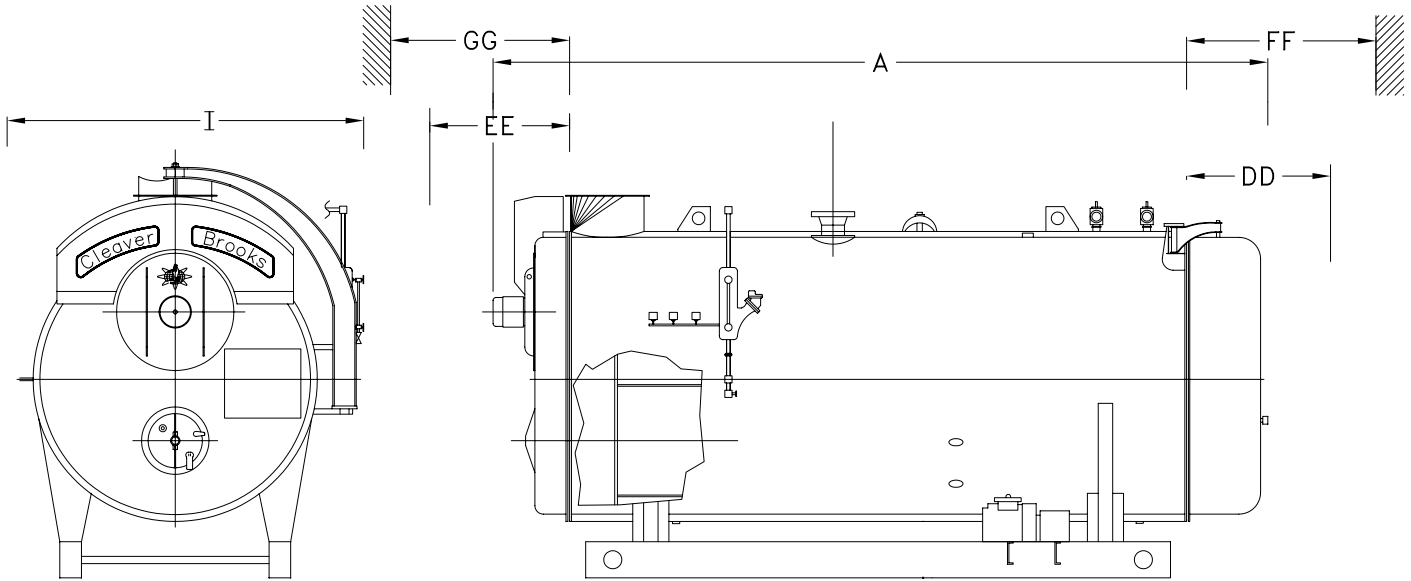
We pioneered the package firetube boiler—the fact is, we know how to build a better solution.

## CBR Features

- 1) Large Primary Furnace for Low Maintenance
- 2) Integral Burner for Optimum Combustion
- 3) Easy-Access Air-Cooled Front Head
- 4) CB Spiral Rib Multi-Pass Heat Transfer
- 5) Large Steam Space
- 6) Multi-Fuel Options



# THE MOST FUEL-EFFICIENT BOILERS AVAILABLE FOR THE LAUNDRY MARKET.



## Firetube Model CBR Dimensions and Ratings

Compact firetube solution for larger laundries.

All measurements are provided in inches. Measurements are the same for steam and hot water units except where noted.

Boiler Horsepower	125	150	200	250	300	350
<b>Dimensions - inches</b>						
Overall Length (A) (60 ppm system)	196.5	199.5	231.5	207	226	258
Overall Length (A) (30 ppm system)	199.5	200.5	233.5	211	228	260
Overall Width - HW (I)	75.5	75.5	75.5	82	82	82
Overall Width - Steam (I)	85	85	85	92	92	92
Rear Door Swing (DD)	32	32	32	36	36	36
Front Door Swing (EE)	67	67	67	75	75	75
Tube Removal - Rear (FF)	139	139	170	143	157	187
Tube Removal - Front (GG)	127	127	158	128	142	172
<b>Ratings</b>						
Rated Capacity (lbs-steam/hr. from and at 212°F)	4,313	5,175	6,900	8,625	10,350	12,075
Btu Output (1000 Btu/hr.)	4,184	5,021	6,694	8,368	10,042	11,715
EDR steam gross (sq. ft.)	17,450	20,920	27,900	34,900	41,850	48,820

Go to **[laundryanddrycleaningboilers.com](http://laundryanddrycleaningboilers.com)**  
to learn how to purchase **The new standard for clean.**



11950 West Lake Park Drive • Milwaukee, WI 53224 USA  
1-414-359-0600 • 1-800-250-5883  
[laundry@cleaver-brooks.com](mailto:laundry@cleaver-brooks.com) • [www.laundryanddrycleaningboilers.com](http://www.laundryanddrycleaningboilers.com)